

# User Manual

## Step Lights

Please read user manual before commencing installation and keep it for future reference.

### ■WARNING.

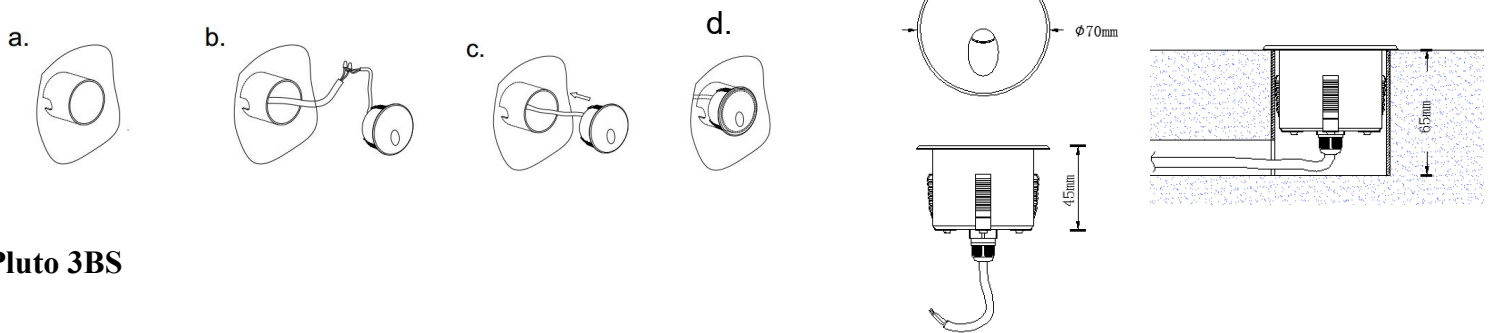
- 1.The safety of this lighting fixture is guaranteed only if you comply with these instructions.
- 2.Don't connect these lighting fixtures to the mains supply directly, and please use the specific proper driver with specific input voltage.
3. The driver must be electronic switching power supply with constant voltage output,must not be magnetic transformer.
4. Please disconnect the power before repair,installation or replacement.
5. Please use the lights in the proper application places as to avoid the lights be broken or glass be broken.
6. Do not locate fixtures in low areas where water will collect.
- 7.If any questions on this instruction,please consult a professional qualified technicians.

### ■Instructions of installation.

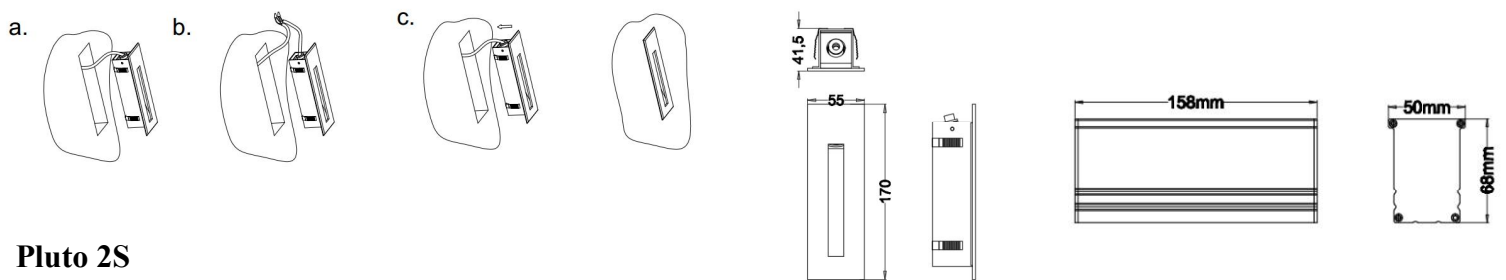
- 1.Ensure mains supply is switched off during the whole installation period.
- 2.Put the mounting sleeve into the wall when constructing the wall,and make the wires from the specific driver with proper length.
- 3.Create a good waterproof IP65 connection between power cable of specific driver and cable of the step light.
- 4.Push the lamp body to the mounting sleeve .

Ensure everything is installed very well,and then turn on the power for the illumination application.

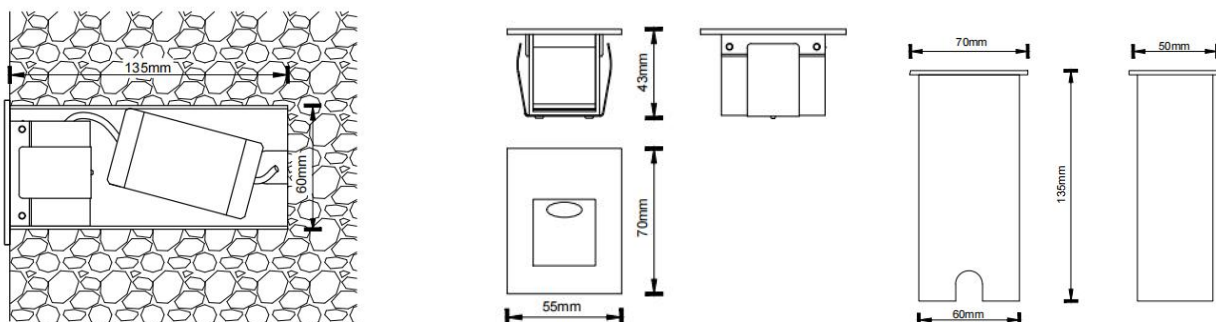
### Pluto 3A /Pluto 3AS



### Pluto 3BS



### Pluto 2S



## ■Specifications.

Item No. Pluto series

Input: AC12V

Power: 3W /2W

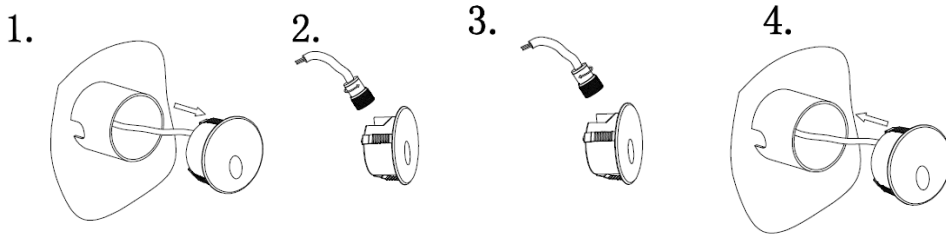
IP rating: IP65

Class: III

## ■Replacement of LED module instructions.

Warning: Turn off the power before and during the whole replacement.

1. Pull the lamp body out from the mounting sleeve, and disconnect the wires connecting between the lamp and driver.
2. Take the old defective module out from the housing by anti-clock direction.
3. Fix the new LED module into the housing by clock direction.
4. Push the lamp body into the mounting sleeve.



! Warning.

The non-professionals can not disassemble or repair the fixture. We keep the right to refuse the replacement or repairing of the fixtures that have been disassembled or repaired personally.