

# Wall Light User Manual

Please read user manual before commencing installation and keep it for future reference.

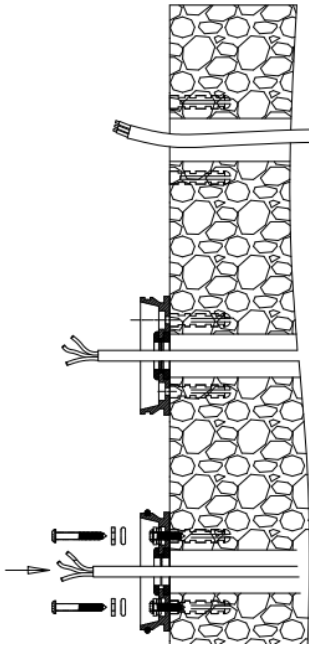
## ■WARNING.

- 1.The safety of this lighting fixture is guaranteed only if you comply with these instructions.
- 2.Don't connect these lights to the mains supply directly,and please use the specific proper driver with specific input voltage.
- 3.The driver must be electronic switching power supply with constant voltage output,must not be magnetic transformer.
4. Please disconnect the power before repair,installation or replacement.
5. Please use the lights in the proper safe places as to avoid the lights be broken.
6. Do not locate fixtures in low areas where water will collect.
7. Whatever the case is, the lamp is not to be insulated liner or similar materials cover.
8. If any questions on this instruction,please consult a professional qualified technicians.

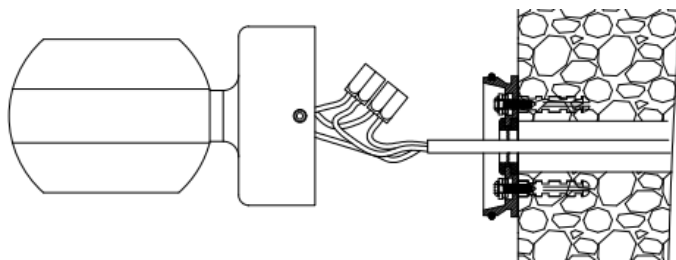
## ■Instructions of installation.

- 1.Ensure mains supply is switched off during the whole installation period.Disconnect the power supply to all of those units.
- 2.Select a suitable location for wall light.
- 3.Please check below drawing and specifications.You should make the cut out for screws and make the tube inside the wall for wires.  
Drill screw holes as the drawing ,and fixed the base plate part on the wall with screws.
- 4.Connect the cables of the fixture and the cables from the specific driver in parallel circuit.
- 5.Push the lamp to the mounted base, then fix the lamp to the round base by provided screws.
6. Ensure everything is installed very well,and then turn on the power for the application.

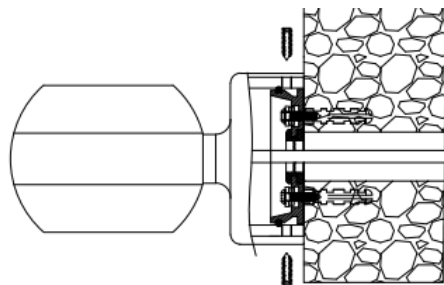
3



4



5



Warning.

The non-professionals can not disassemble or repair the fixture. We keep the right to refuse the replacement or repairing of the fixtures that have been disassembled or repaired personally.